



MONTHLY MEMBERSHIP PROGRESS REPORT

District 325B2

Results as of: 05/31/2019

GMT: KHAGENDRA SITLAULA

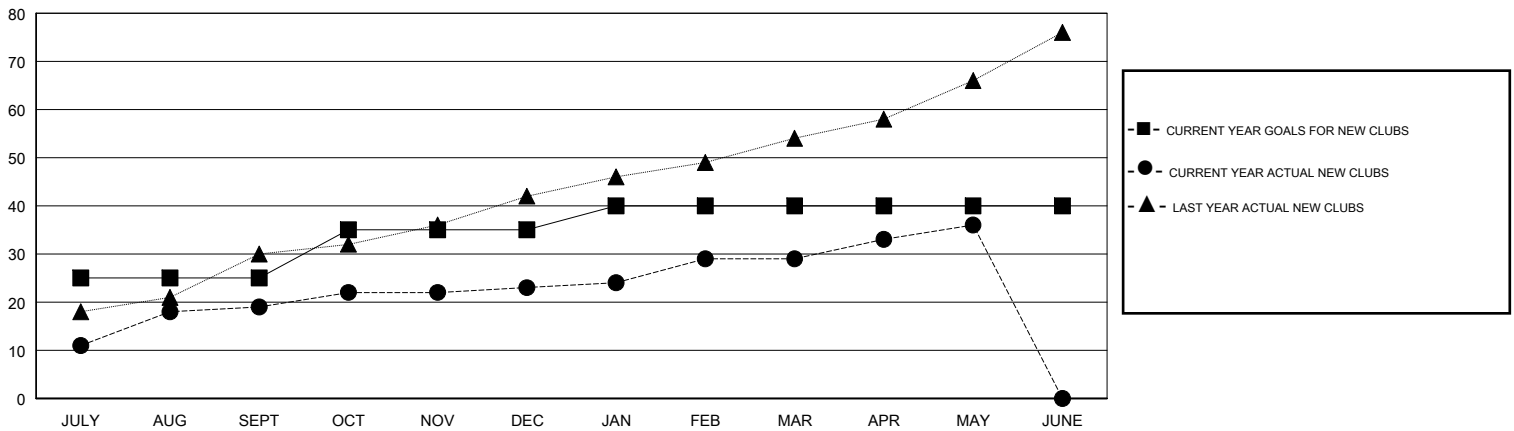
LOCATION NEPAL

GMT CA

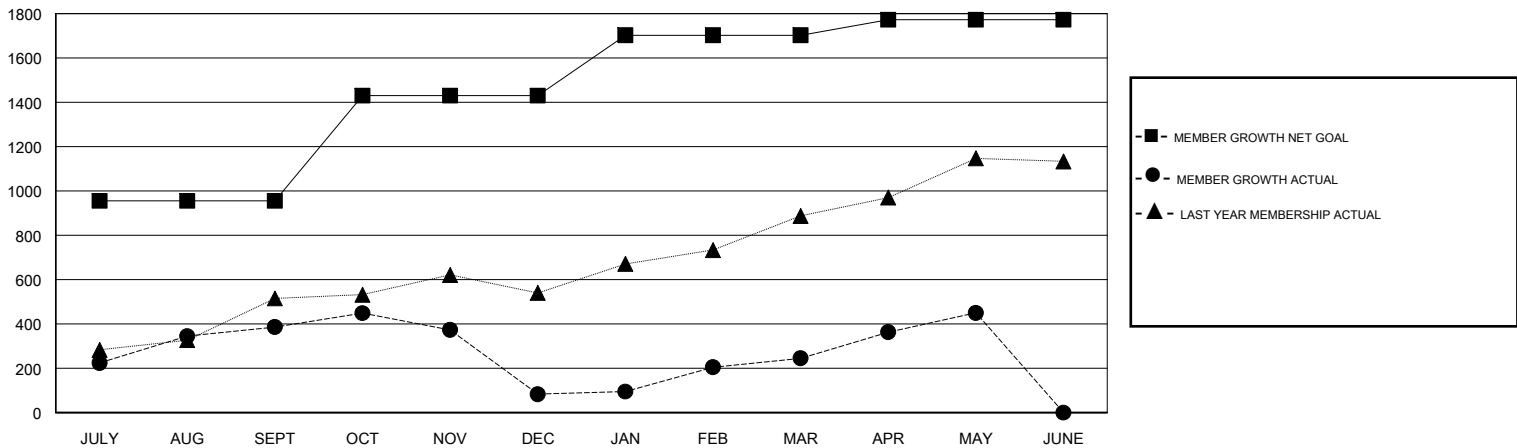
Clubs			
RESULTS FOR 2018-2019			
QUARTER	NEW CLUB GOAL	NEW CLUBS	DROPPED CLUBS
JULY/AUG/SEPT	25	19	2
OCT/NOV/DEC	10	4	12
JAN/FEB/MAR	5	6	0
APR/MAY/JUNE	0	7	0

Members			
RESULTS FOR 2018-2019			
QUARTER	MEMBER GROWTH NET GOAL	MEMBER GROWTH ACTUAL	DROPPED MEMBERS ACTUAL (including transfers)
JULY/AUG/SEPT	955	636	241
OCT/NOV/DEC	475	221	521
JAN/FEB/MAR	272	323	141
APR/MAY/JUNE	70	287	67

GOALS AND ACTUAL NEW CLUBS CUMULATIVE



GOALS AND ACTUAL MEMBERS CUMULATIVE



DROPPED CLUBS: 14

187 CLUBS OF 394 ADDED 1 OR MORE NEW MEMBERS

GENDER DISTRIBUTION

MALE 7,206 (74.77%)
 FEMALE 2,432 (25.23%)
 Women Percentage Fiscal Year Goal: 19%

DROPPED MEMBERS

DECEASED	8
CLUB CANCELLED	210
OTHER	752
TOTAL	970

[CLICK HERE FOR CUMULATIVE MEMBERSHIP DATA](#)

TOTAL FAMILY UNIT MEMBERS	5,225
FAMILY MEMBERS PAYING HALF DUES	3,070